

# Dedusting with Körting Venturi scrubbers

**Körting**

HANNOVER AG

THE  
**EJECTOR**  
COMPANY

# Venturi scrubbers

## from planning plants to commissioning

Venturi scrubbers are mainly used for:

### dedusting

The gas enters the scrubber from the side or from the top. In the same direction of flow as the gas, the liquid is injected into the scrubber through a single nozzle or an evenly spaced array of nozzles at the top.

The combined flow is then massively accelerated because it's directed through the steadily narrowing Venturi throat. In contrast to the liquid drops, the gas and the dust particles quickly reach speeds of up to 150 m/s. Very high relative speeds between the gas and liquid occur.

The resulting shearing forces break up the liquid drops into tiny droplets. At the same time, due to their inertia the dust particles will no longer be able to follow the flow of the gas. They are hurled onto the droplets and separated out as a result.

The energy that has to be transmitted in order to generate relative speeds manifests itself in the pressure consumption of the Venturi scrubber. This is compensated for by a mechanical blower.

The Venturi scrubber that doesn't actively convey the dust is ideal for:

- removing dust with particle sizes less than 3 µm

## Advantages of the Körting Venturi scrubber

Venturi scrubbers have a number of advantages:

- their designs are simple and compact
- little maintenance is required
- they offer high levels of reliability and availability
- there is no fire risk in the scrubber
- investment costs are low and maintenance minimal

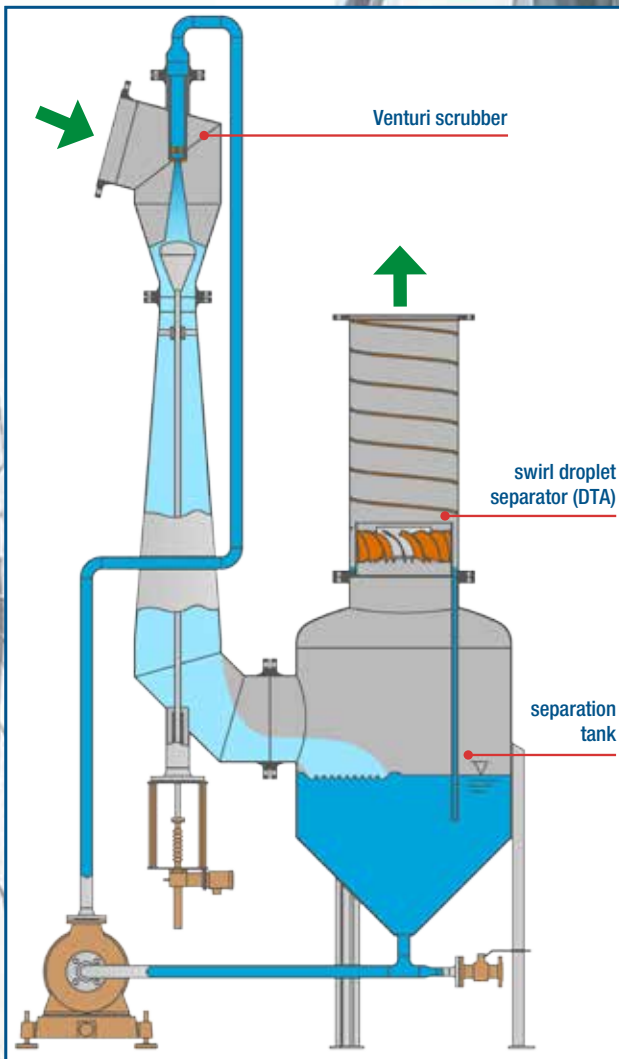
## A typical Körting Venturi scrubbing plant consists of:

- Venturi scrubber
- separation tank
- swirl droplet separator (DTA)

These components all play a part in the process:

The Venturi scrubber separates gas and dust particles.

The purpose of the separation tank is to separate the scrubbed gas and the liquid phase and to act as a buffer before the scrubbing liquid is distributed.



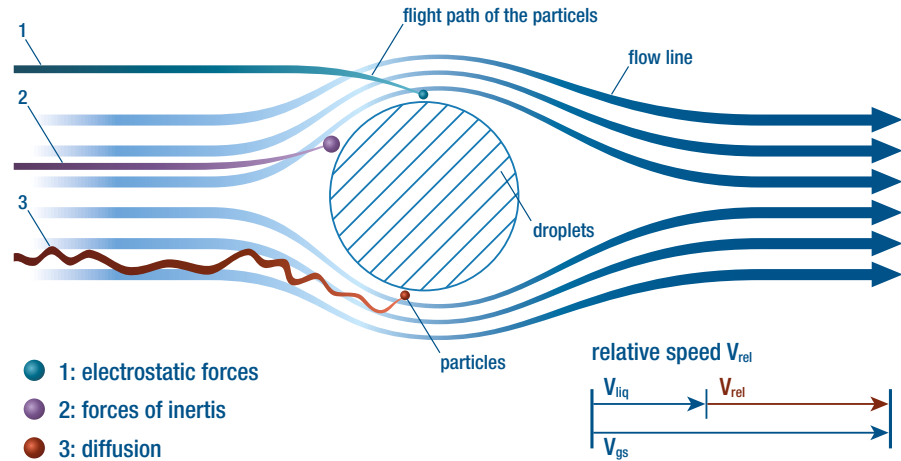
The downstream swirl droplet separator is used to separate the fine droplets caught in the gas flow.

Depending on the engineering requirements, further components can also be added.

## The highway effect

The separation efficiency of the Venturi scrubber is gauged by the pressure consumption of the gas. This is proportional to the relative speed. The higher the relative speed and therefore the pressure consumption too, the smaller the size of dust particles that can be separated.

This process is comparable with flies getting caught on a car windscreen on the motorway. The higher the speed of the vehicle, the smaller the size of the flies that are caught on the windscreen. This is why this process is called the highway effect.



The highway effect explains the principle of the Venturi scrubber's separation capability.

## Dedusting and fractional degrees of separation

Dedusting depends on:

- the diameter and density of the particles
- the number and diameter of the droplets
- the relative speed between the droplets and particles

The greater the density of the dust, the diameter of the particles, the relative speed to the droplets and the greater the number of tiny droplets, the better the separation.

For a known distribution of particle sizes and

a desired degree of separation the energy required (by the fan) can easily be identified. However, for an unknown distribution of particle sizes this is not possible. In this case, further on-site analysis is required in order to get a clearer idea of the particle size distribution.

In the table below the degree of separation of Körtling Venturi scrubbers are listed for different particle sizes and pressure differences. Intermediate values can be approximated by linear interpolation.

separated particle size [µm]	Degree of separation [%]			
	Pressure consumption			
	- 10 mbar	- 20 mbar	- 50 mbar	- 100 mbar
0,01	0	0	0	0
0,05	0	0	0	60,0
0,1	0	0	30,0	90,0
0,5	60,0	80,0	94,0	98,0
1,0	90,0	92,0	96,0	99,1
2,0	95,0	96,0	98,5	99,5
10,0	99,2	99,4	99,5	99,5

(dust load: 1 g/m<sup>3</sup> ; dust density: 2,6 kg/dm<sup>3</sup>)

Higher dust loads and densities improve and lower ones impair separation efficiencies.

## Applications

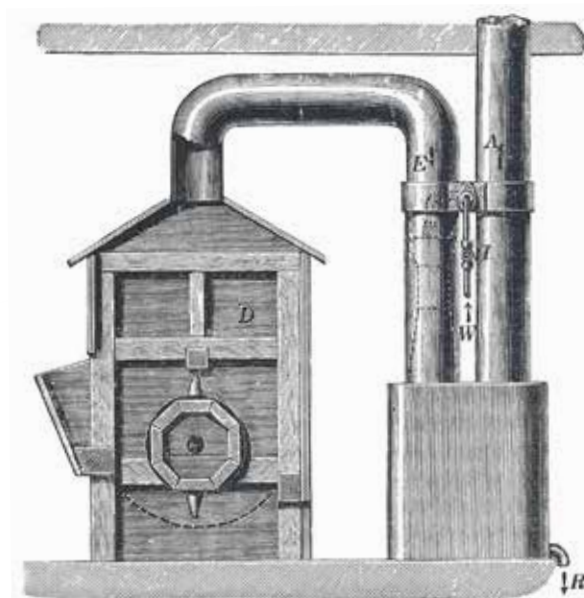
Wet operation enables separation of dust in the following cases:

- where the dust has critical characteristics, i.e. it's hygroscopic, swells or is sticky, which rules dry separation in bag filters out
- after drying systems
- when it comes from steam systems with a hot condensate as scrubbing liquid
- after firing processes (e.g. soot) where the hot flue gas is cooled at the same time
- when it arises from filling mixing and agitating systems

## Sizes

The Körting Venturi scrubbers are only supplied as:

- customised solutions for gas flows of 1 000 to 125 000 m<sup>3</sup>/h, in single or multi-stage designs



Körting Hannover AG's first Venturi scrubber in 1885

## Materials

- carbon steel, stainless steel
- steel with coatings rubber, Halar, etc.
- plastics: GFK, PP, PVC, PVDF reinforced and non-reinforced
- special materials



Venturi scrubber

## Adjustment device

When gas loads change, a height-adjustable Venturi bulb can be fitted in the dedusting section of the Venturi scrubber. The Venturi bulb changes the cross-section of the Venturi throat to suit the actual gas flow. It keeps the relative speed and the difference in pressure required for the dedusting process constant.

Fitting a Venturi bulb has the following benefits:

- a constant pressure difference ensures a constant degree of separation
- by changing the pressure difference the degree of separation can be adjusted

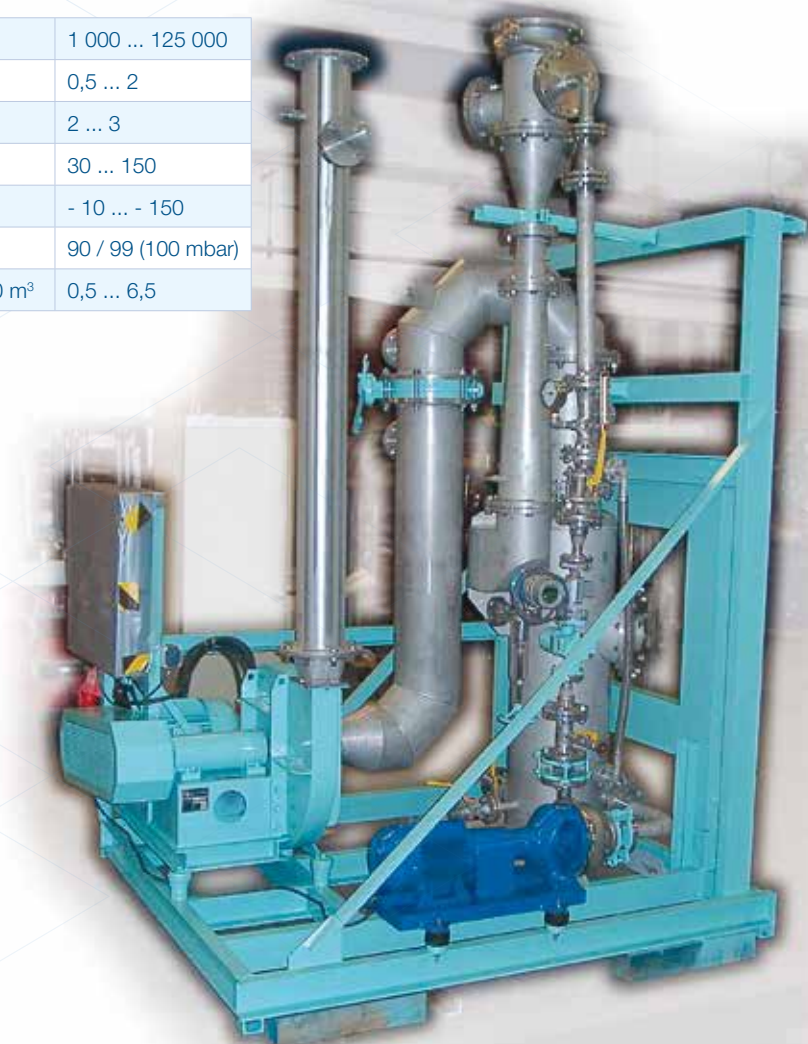
Pressure transmitters on the Venturi scrubber's gas inlet and outlet record the differential pressure which is changed by the adjustment device. The Venturi bulb in the Venturi scrubber is controlled via motorised lifting spindle gears and therefore adapted to the application concerned. Adjustable, mechanical limit switches on the gears restrict the lifting height permitted.

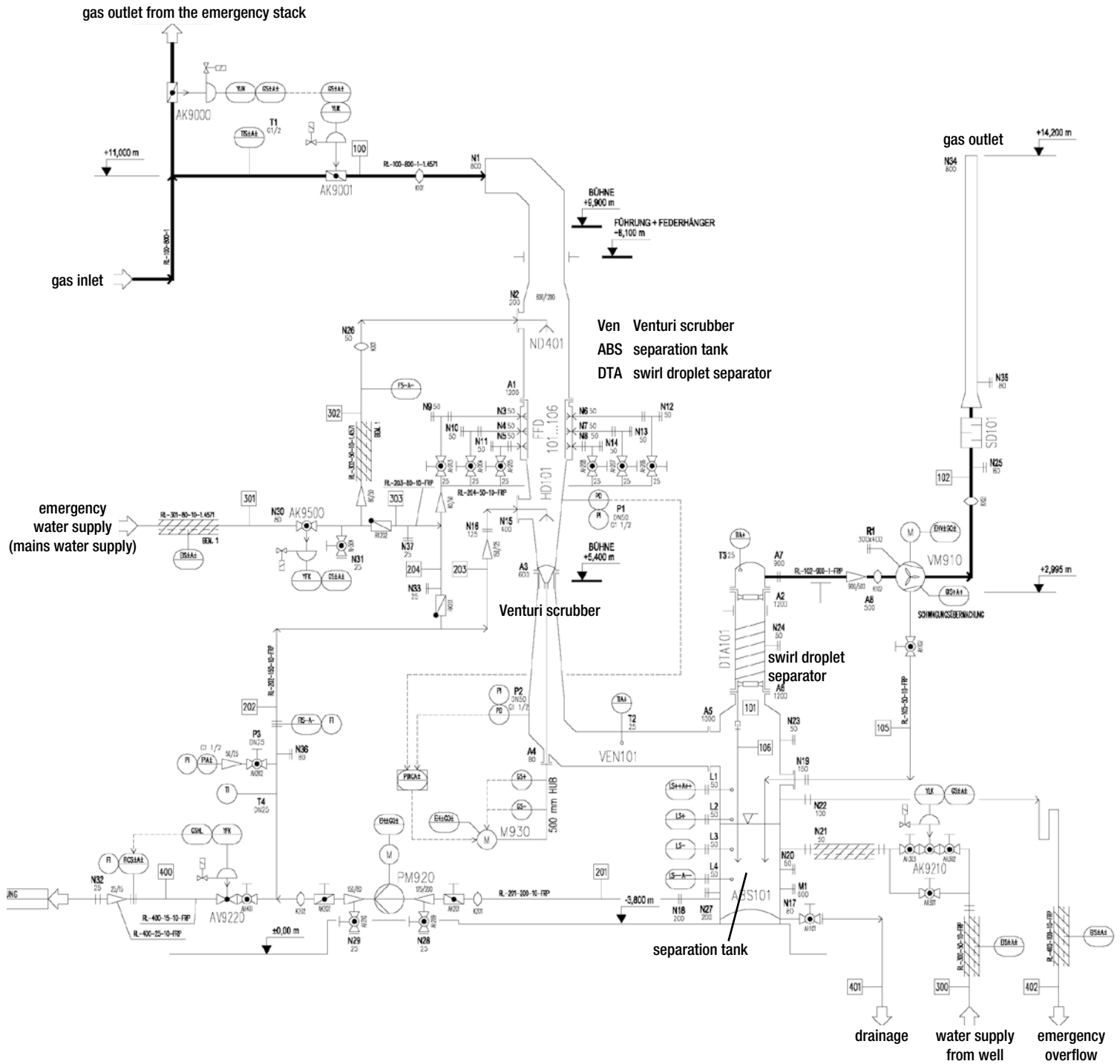
## Key figures

Gas volume flow	[m <sup>3</sup> /h]	1 000 ... 125 000
Liquid requirement per m <sup>3</sup> gas	[l/m <sup>3</sup> ]	0,5 ... 2
Liquid pre-pressure	[bar g]	2 ... 3
Relative speed	[m/s]	30 ... 150
Pressure differential	[mbar]	- 10 ... - 150
Dust separation efficiency (0,1 µm / 1 µm)	[%]	90 / 99 (100 mbar)
Energy consumption	[kWh/1 000 m <sup>3</sup> ]	0,5 ... 6,5

## Pilot plants

To analyse and try out new applications, a transportable pilot plant for gas flows of 1 000 m<sup>3</sup>/h is available.





Flow diagram of an adjustable Venturi scrubbing plant with internal rinsing and upstream emergency quench

**For custom-made designs please request our Körting Venturi scrubber questionnaire!**



FED s.r.l.

Via dei Valtorta, 2  
20127 MILANO  
Italy

Tel.: +39 02 26826332

Fax: +39 02 26140150

E-mail: [fed@fed.it](mailto:fed@fed.it)

[www.fed.it](http://www.fed.it)

